

RHYL

1947

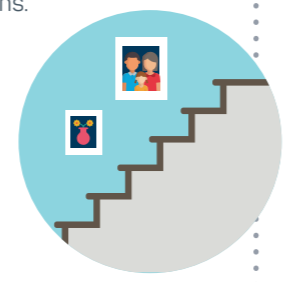


T. Anwyl & sons was officially incorporated.

During this period the business expanded taking on contracting work for companies such as Marks & Spencer, WHSmith & Boots, building homes in Rhyll and neighbouring towns

1991

The company invested in new machinery for our joinery workshop, enabling us to expand our works in creating traditional and bespoke staircases, doors and kitchens.



2001

The company undertook considerable expansion within the housing and contracting division



2008

The company began working in partnership with housing associations and building extra care apartments and care homes.



2014



Anwyl Homes win National Housebuilder of the Year award



2016

Anwyl Group move from Mona Terrace, Rhyll to new purpose built head office at St David's Park, Flintshire



2018

Anwyl Homes continues to go from strength to strength.



203 employees

1930

In 1930 the company was formed as T Anwyl & Son, trading as builders, contractors and general woodworkers. The father and son partnership operated from premises at 2 Millbank Villas, Rhyll, with North Wales being the primary focus.



THE COMPANY HIRED ITS FIRST EVER EMPLOYEE



Expanded house building activity

1980

During the 1980's the decision was taken to grow the house building division outside of the Rhyll area into the surrounding areas of North Wales, Cheshire and Shropshire.

2004

Anwyl achieved the position of 83 in the Profit Track 100 League Table.



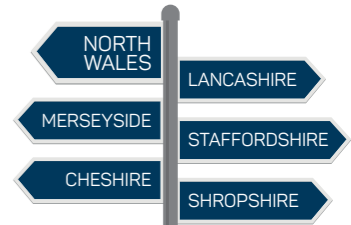
2015

Anwyl celebrated a momentous 85th birthday within the industry. The company won a number of national industry awards including UK housing, LABC, and Housebuilder awards.



2017

Anwyl Homes open new Lancashire office expanding their geographical area to incorporate a new region.



ANWYL
thoughtful homes